

TO LET

MODERN CITY CENTRE OFFICES

FLOORS FROM 2,520 SQ.FT (234 SQ.M.)
UP TO 2,605 SQ.FT. (242 SQ.M.)

75-77 COLMORE ROW, BIRMINGHAM B3 2AP





Location

75-77 Colmore Row occupies the most prestigious business address in the heart of Birmingham's Central Business District. Whilst the CBD continues to expand with new developments at Snowhill, Paradise, Arena Central and Brindleyplace, Colmore Row remains at the heart of the City's business district, benefitting from a wealth of high quality restaurants, bars and coffee shops.

Both New Street and Snow Hill railway stations are within a short walk of 75-77 Colmore Row, in addition to retail centers at Grand Central, the Bullring and the Mailbox.



“
COLMORE ROW REMAINS
AT THE HEART OF THE
CITY'S BUSINESS DISTRICT
”





Description

75-77 Colmore Row occupies a prominent position and offers modern office suites behind an attractive Grade II Listed façade.

A secure entry system provides access to a pleasant common reception area with disabled WC and two lifts, serving the upper floors as well as the lower ground floor, which includes cycle storage, shower and locker facilities.

Each of the office suites, comprise a large open plan area benefitting from their own kitchenette and WC facilities.



“
**MOST PRESTIGIOUS
BUSINESS ADDRESS
IN THE HEART OF
BIRMINGHAM'S
CENTRAL BUSINESS
DISTRICT**
”





Specification

Fully refurbished office space, to include:

- LED and/or LG7 compliant lighting
- Comfort cooling
- Fully raised access floors



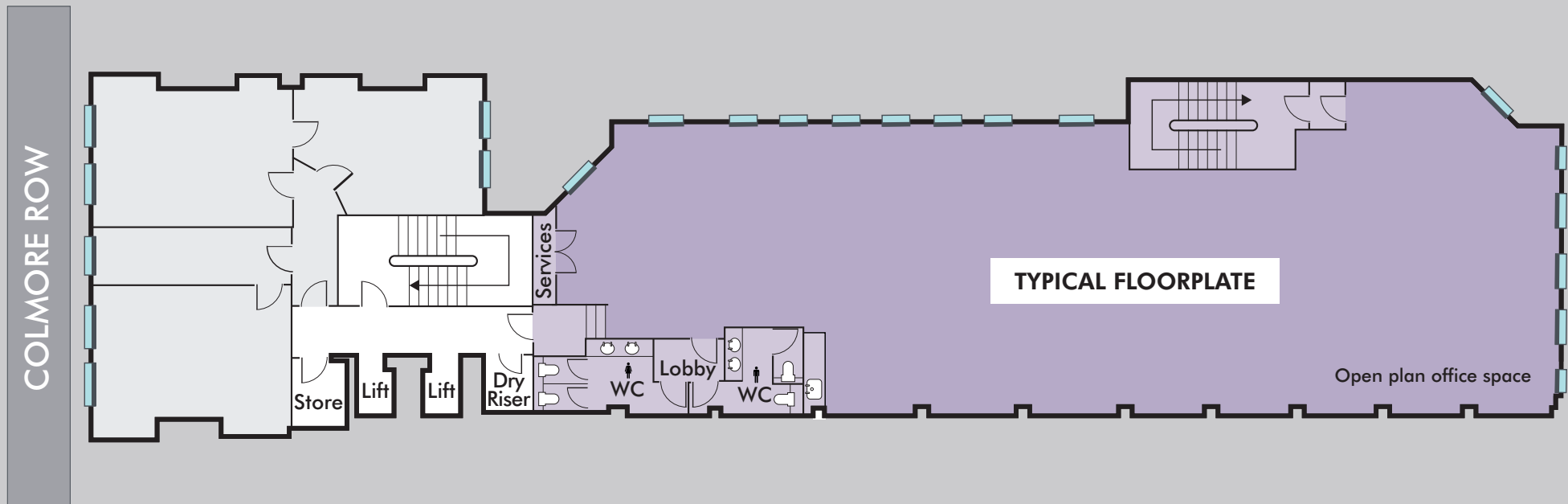
Accommodation

| | | |
|--------------|--------------|-----------|
| Fourth floor | 2,605 sq.ft. | 242 sq.m. |
| Third floor | 2,520 sq.ft. | 234 sq.m. |
| First floor | 2,605 sq.ft. | 242 sq.m. |

Floorplan

Floors are available individually or combined to meet larger requirements.

EPC rating C63.







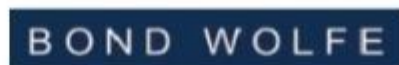


Viewing

For viewing & further information, please contact either of the joint agents;

Charlotte Fullard
Vail Williams
0121 654 1065
cfullard@vailwilliams.com

James Martin
Bond Wolfe
0121 524 1172
JamesMartin@bondwolfe.net



MISREPRESENTATION ACT 1967 and PROPERTY MISDESCRIPTIONS ACT 1991

Lambert Smith Hampton and Bond Wolfe for themselves and for vendors or lessors of this property whose agents they are, give notice that: (1) The particulars are produced in good faith, are set out as a general guide only and do not constitute any part of a contract. (2) No person in the employment of the agent(s) has any authority to make or give any representation or warranty whatever in relation to this property. (3) The property is offered subject to contract and, unless otherwise stated, all rents are quoted exclusive of VAT. (4) Nothing in these particulars should be deemed to be a statement that the property is in good condition or that any services or facilities are in working order. (5) Unless otherwise stated, no investigations have been made regarding pollution or potential land, air or water contamination. Interested parties are advised to carry out their own investigations if required.

Designed by Newmans Limited. 0121 580 8220. REF:17227 AUGUST 2018